



**GENERAL PLANNING POLICY AREAS**  
Other areas covered by Policies in the Plan  
Croydon Opportunity Area (SP1, SP2, SP4, DM38)

**PLACE OF TRANSFORMATION**  
Purley Way Transformation Area  
Brighton Main Line and East Croydon Transformation Corridor (SP9, BML, DM2)

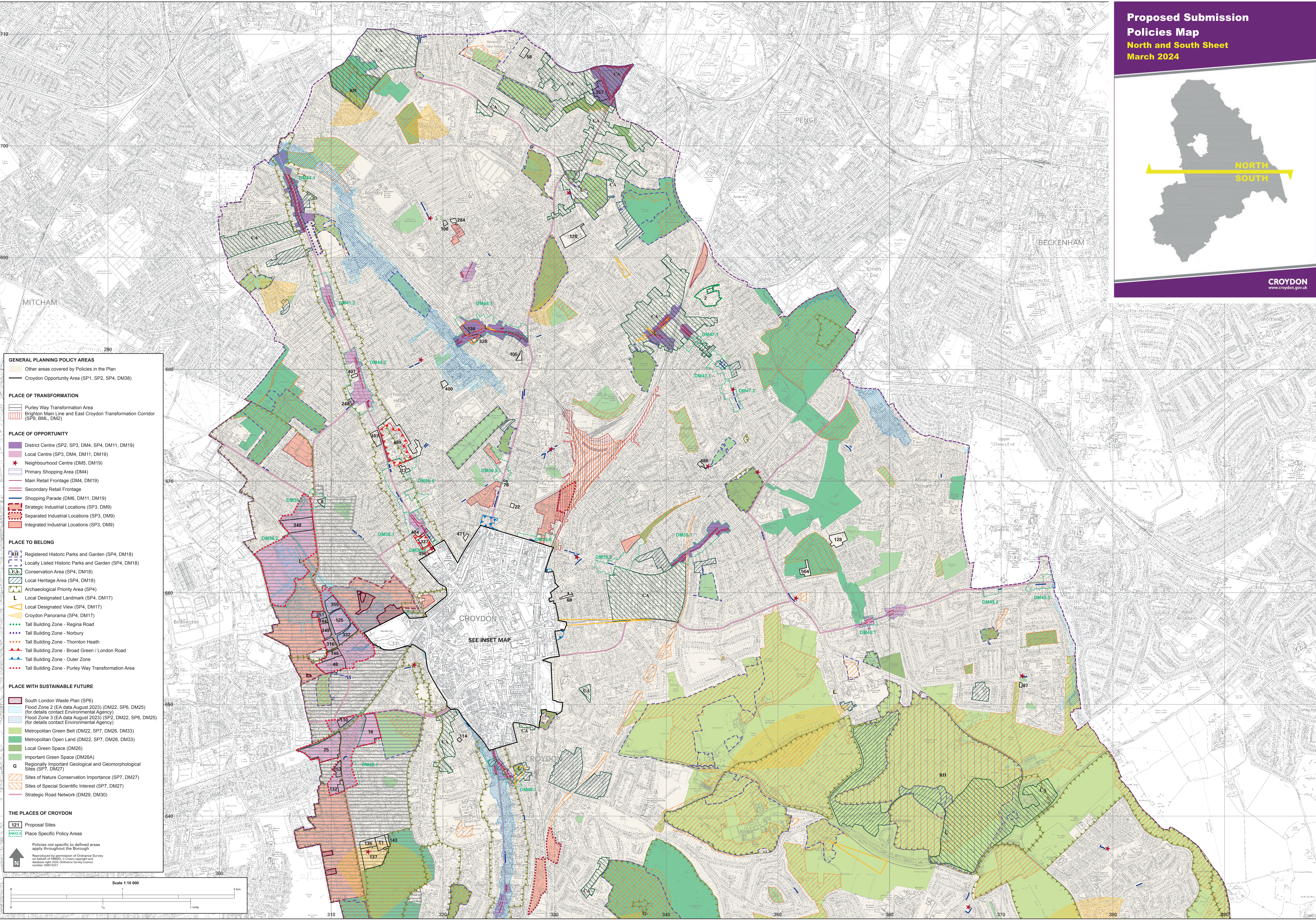
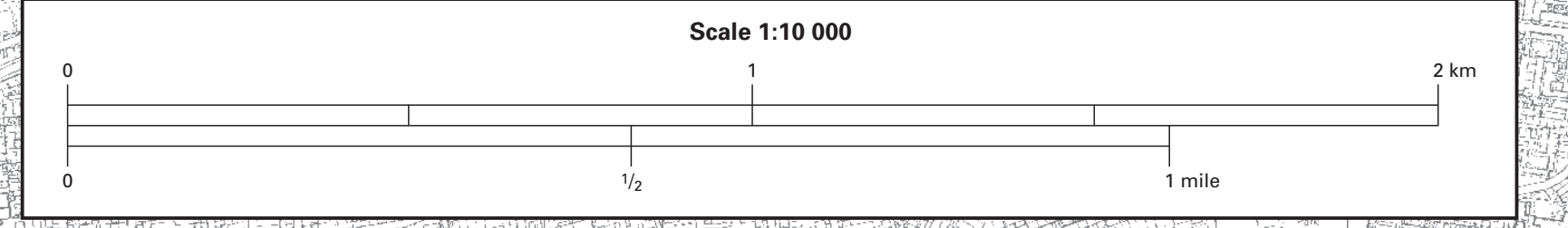
**PLACE OF OPPORTUNITY**  
District Centre (SP2, SP3, DM4, SP4, DM11, DM19)  
Local Centre (SP3, DM4, DM11, DM19)  
Neighbourhood Centre (DM5, DM19)  
Primary Shopping Area (DM4)  
Main Retail Frontage (DM4, DM19)  
Secondary Retail Frontage  
Shopping Parade (DM6, DM11, DM19)  
Strategic Industrial Locations (SP3, DM9)  
Separated Industrial Locations (SP3, DM9)  
Integrated Industrial Locations (SP3, DM9)

**PLACE TO BELONG**  
Registered Historic Parks and Garden (SP4, DM18)  
Locally Listed Historic Parks and Garden (SP4, DM18)  
Conservation Area (SP4, DM18)  
Local Heritage Area (SP4, DM18)  
Archaeological Priority Area (SP4)  
Local Designated Landmark (SP4, DM17)  
Local Designated View (SP4, DM17)  
Croydon Panorama (SP4, DM17)  
Tall Building Zone - Regina Road  
Tall Building Zone - Norbury  
Tall Building Zone - Thornton Heath  
Tall Building Zone - Broad Green / London Road  
Tall Building Zone - Outer Zone  
Tall Building Zone - Purley Way Transformation Area

**PLACE WITH SUSTAINABLE FUTURE**  
South London Waste Plan (SP6)  
Flood Zone 2 (EA data August 2023) (DM22, SP6, DM25) (for details contact Environmental Agency)  
Flood Zone 3 (EA data August 2023) (SP2, DM22, SP6, DM25) (for details contact Environmental Agency)  
Metropolitan Green Belt (DM22, SP7, DM26, DM33)  
Metropolitan Open Land (DM22, SP7, DM26, DM33)  
Local Green Space (DM26)  
Important Green Space (DM26A)  
Regionally Important Geological and Geomorphological Sites (SP7, DM27)  
Sites of Nature Conservation Importance (SP7, DM27)  
Sites of Special Scientific Interest (SP7, DM27)  
Strategic Road Network (DM29, DM30)

**THE PLACES OF CROYDON**  
121 Proposal Sites  
Place Specific Policy Areas

Policies not specific to defined areas apply throughout the Borough  
Reproduced by permission of Ordnance Survey on behalf of HMSSO. © Crown copyright and database right 2023. Ordnance Survey Licence number 100019227



SEE INSET MAP